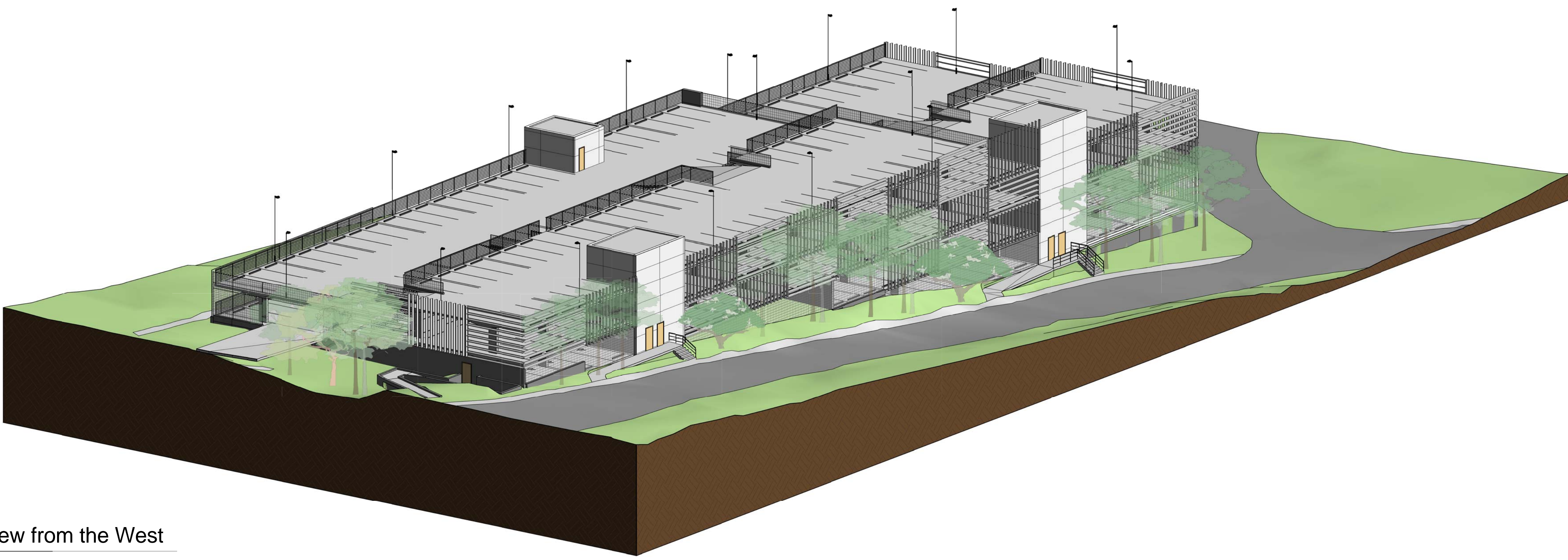


1 3D View from the South
Scale:



3 3D View from the West
Scale:

Sydney 2009
Architectus Sydney Pty Ltd is the owner of the copyright
subsisting in these drawings, plans, designs and specifications.
They must not be used, reproduced or copied, in whole or in
part, nor may the information, ideas and concepts therein
contained (which are confidential to Architectus Sydney Pty Ltd)
be disclosed to any person without the prior written consent of
that company.

Do not scale drawings. Verify all dimensions on site

issue	amendment	date
-	ISSUED FOR REVIEW	06.07.2011
A	ISSUE FOR COORDINATION	02.08.2011
B	DRAFT DA	05.08.2011
C	ISSUE FOR CLIENT FINAL REVIEW	15.08.2011
D	ISSUE FOR DEVELOPMENT APPLICATION	22.08.2011
E	ISSUE FOR DEVELOPMENT APPLICATION	31.08.2011




SITE KEY PLAN:

architectus™

Architectus Sydney
Level 3 341 George Street
Sydney NSW 2000
T (61 2) 8252 8400
F (61 2) 8252 8600
sydney@architectus.com.au
ABN 11 098 489 448

Sydney
Melbourne
Auckland
Brisbane
Shanghai

client


THE UNIVERSITY OF
NEWCASTLE
AUSTRALIA

project

Student Accommodation and
Car Parking

drawing

Perspective Views (Car Park Site)

scale	drawing no.
drawn	KB
checked	RG
project no	100261.00

DA5000

E

31/08/2011 12:28:26 PM DEVELOPMENT APPLICATION